



Box Properties

--Description--

Name:

Type: Vented Box

Shape: Prism, square

--Box Parameters--

Vb = 4.816 cu.ft

V(total) = 6.066 cu.ft

Fb = 30.08 Hz

F3 = 27.52 Hz

Fill = none

--Vents--

No. of Vents = 1

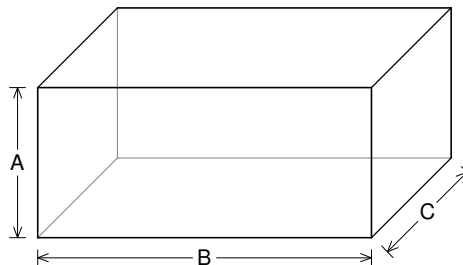
Vent shape = rectangle

Vent ends = one flush

Hv = 10 in

Wv = 2 in

Lv = 10 in



--External Dimensions--

A = 18 in

B = 40 in

C = 18 in

--Internal Dimensions--

A = 16.5 in

B = 38.5 in

C = 16.5 in

--Wall Thickness--

Front = 0.75 in

Side = 0.75 in

Driver Properties

--Description--

Name: XXX 15 D4

Type: Standard one-way driver

Company: RE Audio (2015)

--Configuration--

No. of Drivers = 2

Mounting = Standard

Wiring = Parallel

Drivers sum coherently = Yes

Dual voice coils = parallel

--Driver Parameters--

Fs = 21.52 Hz

Qms = 6.401

Vas = 3.837 cu.ft [7.675]

Xmax = 2.3 in

Sd = 128.6 sq.in [257.2]

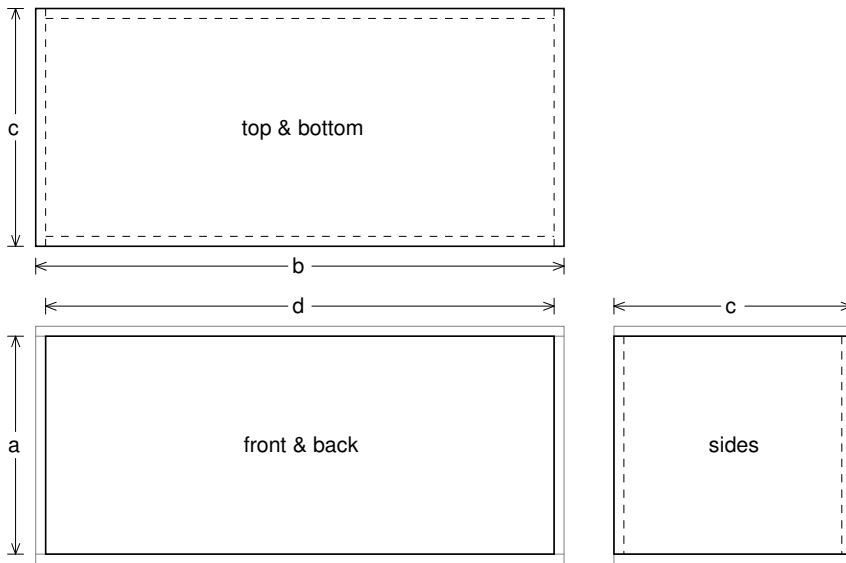
Qes = 0.38

Re = 1.716 ohms [0.858]

Le = 2.017 mH [1.009]

Z = 2.059 ohms [1.029]

Pe = 2000 watts [4000]



Box Parts

Box Shape: Square Prism

- 1 Top, 1 Bottom: depth (c) = 18 in
width (b) = 40, thickness = 0.75 in
- 1 Front, 1 Back: height (a) = 16.5 in
width (d) = 38.5, thickness = 0.75 in
- 2 Sides: height (a) = 16.5 in
depth (c) = 18, thickness = 0.75 in

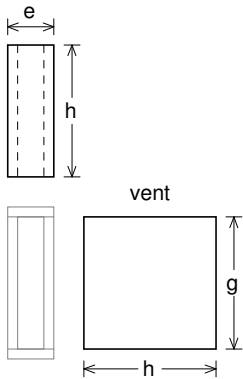
--Driver Mounting--

Mounting: Front

Aim: All drivers face same direction

--Vent Parts--

- 1 Top, 1 Bottom:
width (e) = 3.5, length (h) = 10 in
thickness = 0.75 in
- 2 Sides:
height (g) = 10, length (h) = 10 in
thickness = 0.75 in





Wiring Diagram

